



Building a foundation for lifelong achievement.

Student-Parent Handbook

2025-2026 Academic Year

Table of Contents

Introduction.....	5
Educational Philosophy.....	5
Foundational Statements.....	5
Belief Statements.....	6
Title IX.....	6
St. Stephen School Pledge.....	7
Organization.....	8
Organizational Chart.....	8
Authority of School Personnel.....	8
Student Responsibilities.....	8
School-Student-Parent Compact.....	8
Safety.....	9
Visitor Entry.....	9
Hazing.....	9
Suicide Awareness and Prevention*.....	10
Weapons and Assault.....	13
Possession of Tobacco.....	13
Care of School and Grounds.....	13
Hallways and Restrooms.....	14
Money.....	14
Demographics.....	14
Change of Email, Postal Mailing Address, and Other Information.....	14
Child Custody Issues.....	14
Phone Calls.....	14
Cell Phones and Personal Electronic Devices.....	15
Finances and Tuition.....	15
Tuition Policy.....	15
Raise Right.....	15
Parent Partnership Program.....	16
Tuition Assistance Programs.....	16
Communication.....	16
Public School District and Federal Services.....	17
Textbooks and Supplies.....	17
Academic Information.....	18
Teachers and Classes.....	18
Parent-Teacher Communication.....	18
Parent-Teacher Conferences.....	18

Report Cards.....	18
Grade Scale.....	18
Homework.....	19
Missed Classwork.....	19
Academic Dishonesty/Plagiarism.....	20
Field Trips.....	20
Curricula.....	20
Standardized Assessments.....	20
Religion and Ethics Education.....	21
Technology and Robotics.....	22
Library.....	22
Academic Honors.....	22
Failure/Retention.....	23
Student Records.....	23
Non-Academic Information.....	23
Catholic Mission Memorandum of Understanding.....	23
Religious Participation by Non-Catholic Students.....	23
Disciplinary Measures.....	24
Demerit System.....	25
Lunch Detention.....	27
Afterschool Detention.....	27
Bullying and Cyberbullying.....	27
Definitions.....	27
Reporting.....	28
Consequences for Violations.....	28
Anti-Bullying Investigation Procedure.....	29
Internet and Social Media.....	29
Calendars.....	29
Annual School Calendar.....	29
Monthly School Calendar.....	29
Uniform Policy.....	30
Boys' Uniforms.....	30
Girls' Uniforms.....	31
Consequences for Uniform Violations.....	31
Dress Code for Non-Uniform Days.....	31
Gym Uniform.....	32
School Supplies.....	33
Daily Arrival and Dismissal.....	33

Arrival.....	33
Dismissal.....	34
Early Dismissal.....	34
School Bus Transportation.....	34
School Closings and Delays.....	35
Student Absence & Tardiness.....	36
Lawful Excuses.....	36
Cumulative Lawful Absences.....	37
Unlawful Absences.....	37
Truancy.....	37
Half Day Absences	37
Tardiness	38
School Lunch Program.....	38
Snacks.....	38
Water Bottles.....	38
School Health Program.....	39
Accidents and Illness at School.....	39
Immunization Requirements.....	39
Screenings.....	39
Illnesses & Hospitalizations.....	40
Medications.....	40
Volunteers.....	41
Volunteers.....	41
Sports and Extracurricular Activities.....	42
Academic Requirement.....	42
Attendance Requirement.....	42
Incomplete Assignments and Conduct.....	42
Appendix.....	43
Parent Partnership Program.....	44
Application for Educational Travel.....	46
Technology Lease Agreement.....	47
St. Stephen School Student Transportation Pledge.....	54

Introduction

Educational Philosophy

The primary purpose of St. Stephen School is the development of the whole child in a mutually supportive Christian environment. Administrators, teachers, and parents as educators, play a vital role in creating an atmosphere in which each individual is treated with respect and compassion. The strong relationships developed at St. Stephen School nurture an atmosphere of cooperation, understanding, and caring. Parents are recognized as the primary educators of their children. Therefore, parent and teacher communication is essential, encouraged, and maintained.

The curriculum is based on rigorous academic standards, designed to encourage the spiritual, intellectual, social, and emotional development in each child. It recognizes that each student is an individual with unique skills and talents. Intellectual growth is achieved through a variety of current strategies and effective and diverse teaching practices.

St. Stephen School fosters Catholic values along with the progressive development of each child's self-concept, self-expression, social responsibility, and physical development. By guiding students in their total development, we as Christian educators, prepare them for their future as active and participating Christian citizens of the world.

Foundational Statements

Mission Statement

Faithful to the Roman Catholic tradition, St. Stephen School, will educate children to be people of faith and service guided by the teachings of Jesus Christ and the Church. We will prepare students to be critical thinkers and to lead lives of integrity.

Vision Statement

The St. Stephen School community aspires to:

- Provide a safe environment, enabling students and teachers to achieve at a high level.
- Affirm the dignity of each student created in the image of God.
- Teach the whole student in mind, body, and soul.
- Promote a curriculum and philosophy of education reflecting academic excellence in the Catholic intellectual tradition.
- Graduate students who are ready to succeed personally and professionally regardless of the path they choose.
- Nurture a strongly Catholic school culture.
- Welcome students and families of diverse religious and personal backgrounds.
- Offer attractive facilities that encourage learning and teaching.

- Cultivate strong relationships with all stakeholders to provide the prayerful and material support necessary to engage our students and sustain the mission of the school.

Belief Statements

Catholic Schools in the Diocese of Erie

1. We believe that every child is a uniquely created gift from God graced with inherent dignity and worth.
2. We believe that all students can best reach their fullest potential in a safe, nurturing and faith-filled environment.
3. We believe that every student has unique strengths and talents and can excel in a rigorous, supportive environment.
4. We believe that Prayer, the Sacraments and Christ-centered values permeate all that we do.
5. We believe that a standard of excellence must be maintained in all academic areas.
6. We believe that it is the shared responsibility of educators, family, parish and community to provide for the development of the whole child: spiritual, intellectual, social, physical and emotional.
7. We believe it is the responsibility of our schools to help students discern God's call for their life.
8. We believe that students must develop the skills necessary to respond to God's call in a global society.
9. We believe that everyone is called to serve others.
10. We believe in the value of strategic planning and professional development as a means of continuous improvement.
11. We believe that adherence to the teachings of the Roman Catholic Church and fidelity to the Bishop of the Diocese of Erie will create a community united on its journey to the truth.

Title IX

While reserving the right to make religious exemptions as provided by law and in accord with Catholic religious belief, the Catholic schools within the Diocese of Erie do not discriminate on the basis of sex. This includes being excluded from participation in, being denied the benefits of, or being subjected to discrimination under any education program or activity on the basis of sex.

Additional Title IX information is available at
<https://www.eriescd.org/schools/titleix.html>

St. Stephen School Pledge

I am Faithful.
I am Respectful.
I am Responsible.

I am here for a specific purpose,
and I will follow Jesus in all that I do.
I will serve others with kindness and love.

I will care for our school, our building, and all our materials.

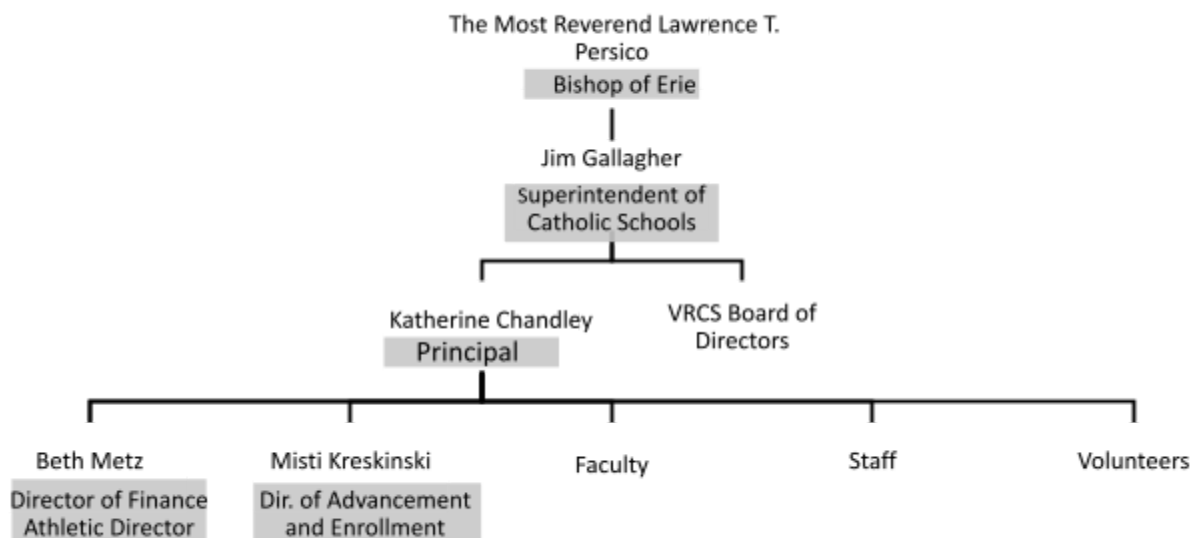
I will work hard,
face challenges with courage,
and never give up.

I will respect my teachers,
my classmates,
and myself at all times.

I am a St. Stephen School Knight.

Organization

Organizational Chart



Authority of School Personnel

All administrators, teachers, specialists, aides, monitors, etc., have the authority to direct activities and students throughout the building. This authority exists on school grounds as well as school sponsored activities. Students are required to respond to the persons in authority in accordance with accepted standards of conduct and manners.

Student Responsibilities

Student responsibilities include regular school attendance and conscientious effort in classroom work. Students share with the administration and faculty a responsibility to develop a climate within the school that is conducive to wholesome learning and living. NO STUDENT HAS THE RIGHT TO INTERFERE WITH THE EDUCATION OF FELLOW STUDENTS. It is the responsibility of each student to respect the rights of teachers, students, and administrators and all others who are involved with the educational community.

School-Student-Parent Compact

A Compact is a commitment to sharing responsibility for student learning. This document explains what families and schools can do to help children reach high academic standards of excellence. This agreement outlines the goals, expectations and shared responsibilities of the school and parent as equal partners for student learning.

The School-Student-Parent Compact must be signed before the start of each school year. The document details the expectations for all parties involved in order to further the education of the student while at St. Stephen School.

Safety

In addition to a quality education, we strive to maintain a safe and secure learning environment. Student safety is of primary importance. St. Stephen School has developed a Crisis Plan to be implemented in the event of emergencies. The plan is regularly updated and reviewed with staff. Classroom teachers periodically review safety procedures with students and safety drills are conducted.

Visitor Entry

Entryways to the school are locked during school hours. All visitors must enter through the main entrance located at the corner of West 3rd Street and Reed Street which is entered through a camera/buzzer entry system. All entryways are continually monitored via camera during school hours and posted with signs requiring everyone to sign in at the school office. Visitors must sign in upon entry and wear badges; upon exit visitors must sign out and return badges.

Hazing

Hazing is any action or situation which recklessly or intentionally endangers the mental or physical health or safety of a person or which willfully destroys or removes public or private property for the purpose of initiation or admission into or affiliation with, or as a condition for continued membership in, any organization. The term shall include, but not be limited to, any brutality of a physical nature, such as whipping, beating, branding, forced calisthenics, exposure to the elements, forced consumption of any food, liquor, drug or other substance, or any other forced physical activity which could adversely affect the physical health and safety of the individual, and shall include any activity which would subject the individual to extreme mental stress, such as sleep deprivation, forced exclusion from social contact, forced conduct which could result in extreme embarrassment, or any other forced activity which could adversely affect the mental health or dignity of the individual, or any willful destruction or removal of public or private property. For purposes of this definition, any activity as described in this definition upon which the initiation or admission into or affiliation with or continued membership in an organization is directly or indirectly conditioned shall be presumed to be "forced" activity, the willingness of an individual to participate in such activity notwithstanding.

St. Stephen School does not condone any form of initiation or harassment, known as hazing, as part of any school-sponsored student activity. No student, coach, sponsor, volunteer, or employee shall plan, direct, encourage, assist or engage in any hazing activity. No administrator, coach, sponsor, volunteer or employee shall permit, condone or tolerate any form of hazing.

Students who have been subjected to hazing should promptly report such incidents to the school principal.

Suicide Awareness and Prevention*

*In conjunction with Policy 302.9 from the Diocese of Erie

Church Teaching

“Everyone is responsible for his life before God who has given it...It is God who remains the sovereign Master of life. We are obliged to accept life gratefully and preserve it for his honor and the salvation of our souls. We are stewards, not owners, of the life God has entrusted to us...[Suicide] is gravely contrary to the just love of self. It likewise offends *the love of neighbor* because it unjustly breaks the ties of solidarity with family, nation, and other human societies to which we continue to have obligations. Suicide is contrary to love for the living God...We should not despair of the eternal salvation of persons who have taken their own lives. By ways known to him alone, God can provide the opportunity for salutary repentance. The Church prays for persons who have taken their own lives.” (Catechism of the Catholic Church 2280-83)

Purpose

St. Stephen School adopts this policy in acknowledgement of its commitment to maintaining a safe school environment; to protect the health, safety, and welfare of its students; to promote healthy development; and to safeguard against the threat or attempt of suicide among school-aged youth. The impact of students’ mental health on their academic performance and the effect of mental health issues and suicide on students and the entire school community are significant. Therefore, to ensure the safety and welfare of students, the school will work to educate school personnel and students on the actions and resources necessary to prevent suicide and promote mental well-being.

Authority

This policy shall apply in any situation where a student is expressing suicidal thoughts or intentions of self-harm on school property, at any school-sponsored activity, or on any school-owned or public vehicle providing transportation to or from the school or school-sponsored activity. This policy shall also apply following a student’s suicide threat or attempt that does not occur on school grounds or during a school-sponsored activity, but that is reported to any school personnel.

Definitions

At-Risk for Suicide shall mean any youth with risk factors or warning signs that increase the likelihood of suicidal behavior.

Behavioral Health shall mean the emotion, behaviors and biology related to a person’s mental well-being, their ability to function in everyday life and their concept of self.

Expressed Suicidal Thoughts or Intentions shall mean a verbal or nonverbal communication that an individual intends to harm him/herself with the intention to die, but has not acted on the behavior.

Prevention refers to efforts that seek to reduce the factors that increase the risk for suicidal thoughts and behaviors and increase the factors that help strengthen, support, and protect individuals from suicide.

Protective Factors shall refer to characteristics (biological, psychological, and social) that reduce risk and the likelihood of the individual developing a mental illness.

Resilience shall refer to an individual's innate ability to persevere in the face of adversity and reduce the risk of unhealthy outcomes.

Risk Factors shall mean the personal or environmental characteristics associated with suicide. People affected by one or more of these risk factors have a greater probability of suicidal behavior.

School Connectedness shall mean the belief by students that adults and peers in the school care about their learning as well as about them as individuals.

School Personnel include, but may not be limited to, administrators, teachers, paraprofessionals, support staff, coaches, bus drivers, custodians, and cafeteria workers.

Suicide shall refer to death caused by self-directed injurious behavior with any intent to die as a result of the behavior.

Suicidal Act or Suicide Attempt shall mean a potentially self-injurious behavior for which there is evidence that the person probably intended to kill him/herself; a suicidal act may result in death, injuries, or no injuries.

Warning Signs are evidence-based indicators that someone may be in danger of suicide, either immediately or in the very near future.

Awareness and Prevention

All school personnel, including, but not limited to, administrators, teachers, paraprofessionals, support staff, coaches, bus drivers, custodians, and cafeteria workers, shall receive information regarding the school's protocols for suicide awareness and prevention. Education will be provided for all school personnel about the importance of suicide prevention and recognition of suicide risk factors, as well as strategies to enhance protective factors, resilience, and school connectedness. Additionally, all school personnel will be educated about the warnings signs and risk factors for youth depression and suicide.

Students shall receive age-appropriate lessons in their classrooms through health education or other appropriate curricula on the importance of safe and healthy choices, as well as help seeking strategies for self and/or others. Lessons shall contain information on comprehensive health and wellness, including emotional, behavioral and social skills development. Students shall be taught not to make promises of confidence when they are concerned about a peer or significant other. These lessons may be taught by health and physical education teachers, community service providers,

classroom teachers or student services staff. Students who are in need of intervention shall be referred in accordance with the school entity's referral procedures for screening and recommendations.

Intervention

In compliance with state regulations and in support of the school's suicide prevention methods, information received in confidence from a student may be revealed to the student's parents or guardians, the administration or other appropriate authority when the health, welfare or safety of the student or other persons is at risk.

Any school personnel who has identified a student with one or more risk factors, or warning signs, or who has an indication that a student may be contemplating suicide, shall refer the student for further assessment and intervention in accordance with the school's referral procedures.

The school shall create an emotional or mental health safety plan to support a student and the student's family if the student has been identified as being at increased risk of suicide.

For students with disabilities who are identified as being at-risk for suicide or who attempt suicide, the appropriate team shall be notified and shall address the student's needs in accordance with applicable law, regulations and diocesan policy.

Any school personnel who are made aware of any threat or witnesses any attempt towards self-harm that is written, drawn, spoken, or threatened shall immediately notify the administration. Any threat in any form shall be treated as real and dealt with immediately. No student should be left alone, nor confidences promised. In cases of life-threatening situations, a student's confidentiality will be waived. The school entity's crisis response procedures shall be implemented.

If an expressed suicide thought or intention is made known to any school personnel during an afterschool program and the administration or designee is not available, call the Venango County PIC Unit at (814) 432-9111, 1-800-SUICIDE, or 1-800-273-TALK for help. Thereafter, immediately inform the administration of the incident and actions taken.

Procedures for Parental Involvement:

The parents or guardians of a student identified as being at risk of suicide must be immediately notified by the school and must be involved in consequent actions. If any mandated reporter suspects that a student's risk status is the result of abuse or neglect, that individual must comply with the reporting requirements of the Child Protective Services Law.

If the parent or guardian refuse to cooperate and there is any doubt regarding the child's safety, the school personnel who directly witnessed the expressed suicide thought or intention will pursue a 302 involuntary mental health assessment by calling the Venango County PIC Unit at (814) 432-9111 and ask for a delegate. The delegate

will listen to concerns and advise on the course of action. If a 302 involuntary mental health assessment is granted, the first-hand witness will need to be the petitioner, with support from the administration.

Response to Suicide or Suicide Attempt on Campus:

The first school personnel on the scene of a suicide or suicide attempt must follow the school entity's crisis response procedures, and shall immediately notify the administration.

The school will immediately notify the parents or guardians of the affected student(s).

Weapons and Assault

Students are not permitted to have any type of weapons, including but not limited to firearms, knives, and look-alike weapons, on their person or in their desks at any time. Students are not to carry anything to school that may be harmful to the health, safety, and welfare of themselves or others. Administration may use their discretion when interpreting use and intent with such objects.

Students are not permitted to have in possession, or intent of creating or using, any device such as smoke bombs, firecrackers, M-80's incendiary devices, or other explosives, while under the authority of the school or at school related activities.

Students and non-students who see or become aware of a weapon at school must not touch it or remain in the presence of the person or group with the weapon. Students must notify an adult immediately for the safety of all concerned. Administration or a teacher must be notified immediately.

Students are guilty of assault if they attempt to cause or cause bodily injury to another student, school staff, or school employee. Fighting (no matter who started it), hitting, slapping, pinching, and pushing will not be tolerated and will most likely result in suspension from school and/or referral to police.

Possession of Tobacco

Students are not to be in possession of tobacco, tobacco products, vaping products, or any harmful substances, while under the authority of the school, on the school bus, or at a school related activity. If a student is found in possession of these products or substances will be reported to the District Magistrate.

Care of School and Grounds

Students share in the responsibility of keeping the building, property, and the equipment in good condition. Defacing or damaging school property or buses will not be tolerated. Offenders will be required to pay for damages caused. Police may be notified.

Hallways and Restrooms

Hallways are not to be used for any activity that could harm the safety and welfare of other students. Noise and talking in the hall must be kept to a minimum so as not to disrupt other classrooms. Students must have permission from their teacher to be out of their classroom. Students are not to carry pencils, crayons, markers, or marking pens to the restroom. Leaving the classroom or school building without permission will result in disciplinary action.

Money

Money sent into the school for fundraisers, field trips, etc. should be sent in an envelope clearly marked with the student's name, grade, and specific purpose. Money for different purposes are not to be combined into a single check as they may be distributed into different accounts. Checks should be made payable to Venango Region Catholic School unless otherwise noted.

Demographics

Change of Email, Postal Mailing Address, and Other Information

It is the responsibility of parents to inform the school of changes to mailing address, phone number, email address and any other important contact information in case of emergency or other communication reasons. Please inform the school office of any changes.

Child Custody Issues

It is the responsibility of parents to provide the school with a current copy of any court orders involving student(s). The school will make a copy of your current court order to be placed in the student file and for school reference.

Phone Calls

Student use of the school phone will be limited to emergencies only. If a student forgets an item at home, permission may be granted to call home under supervised conditions. However, this is not guaranteed and will be considered on a case-by-case basis. Students are expected to come to school prepared each day with the necessary materials, supplies, assignments, and lunch. Repeated lack of preparedness may result in consequences as outlined in the school's discipline policy.

Classes will not be disrupted for incoming phone calls. If you need to leave a message for a teacher, please call the school and a message to return your call will be forwarded to the teacher. Return calls will be made at the staff's convenience.

Cell Phones and Personal Electronic Devices

Students are not permitted to use cell phones or other personal electronic devices during the school day. If a student must carry a cell phone, personal computer, or other personal electronic device it must be kept in their backpack and turned off throughout the day. Wearable technology such as iwatches and Fitbits with 2-way communication are also prohibited. The school is not responsible for any lost, stolen, or broken cell phones or devices. The first offense for violation of the cell phone and personal electronic device usage policy will result in the phone or device being confiscated and the student's parents or guardian must come to the office to retrieve it and will result in the student receiving a demerit. If there is a second offense, the child will be prohibited from bringing in the device at all and receive detention.

Finances and Tuition

Tuition Policy

Diocesan Policy allows families to pay their tuition either annually (in August) or by using the FACTS Management Co. tuition payment program that automatically deducts a specified amount from your checking or savings account based on ten months.

Any school family failing to pay their account according to their agreement with the school or who have been unwilling to make suitable alternative arrangements with the school, may have their children withheld from class until the situation is corrected.

Families that depart from St. Stephen School with outstanding balances will not have transcripts forwarded to the student's next school until financial restitution is completed. Also, students are not allowed re-admittance until all outstanding financial obligations are met from the previous school year.

Raise Right

From July 1 to June 30 of the following year, each family will need to generate \$300 dollars in profit by purchasing Raise Right gift cards. An agreement form must be signed and on file for your family to get credit. No purchases will be applied to your account until this form has been completed. Purchases made by friends and family can also be applied to your account if they have a signed agreement on file. The \$300 Raise Right requirement will be directly applied to family tuition payments. As a family earns Raise Right credit, it will be applied to the family account.

For each gift card purchased, a percentage of the amount (depending on the gift card) will be applied toward this \$300 requirement. If you earn more than the \$300, the money can be:

- Applied directly to your family's individual tuition account to offset tuition
- Donated to the school

- Sent to you at the end of the school year in the form of a check

Gift cards may be purchased in any VRCS school campus office by stopping in or sending your order to school with your child. Please pay attention to the monthly school calendar for ordering dates. Gift cards and electronic gift cards may also be purchased through www.raiseright.com or the Raise Right Fundraising app.

Parent Partnership Program

The purpose of the Parent Partnership Program is to drive **engagement, volunteerism, and community building** within St. Stephen's School and our local area. This program will provide opportunities for school families to engage in their preferred way, offering credit for contributing their time, talent, and treasure.

Each school family will have a **\$250.00 Parent Partnership** charge applied to their tuition account. Throughout the year, families will have the **opportunity to offset or negate** this charge by participating in the program in ways such as volunteering at events, selling raffle tickets, and purchasing items for auctions.

The outline of the Parent Partnership Program is included in the appendix.

Tuition Assistance Programs

The total cost to educate a student at St. Stephen School is \$11,000. We know that charging this full amount would place a huge financial burden on most families. Therefore, each student automatically receives over \$6,000 in financial aid. In order to receive this generous financial aid, we just ask that families do one of the following:

1. Apply for financial aid using the Diocese of Erie Tuition Assistance Program application online. Those who complete the application and are eligible may receive additional assistance towards their tuition expenses.
2. Become an EITC donor through our partners at RedefinED.

Directions to complete the DOETAP application can be found at <https://www.doetap.org/> and on the school website.

Information regarding EITC can be found at <https://redefiningeducation.org/> and on the school website.

Communication

Parents are invited and strongly encouraged to initiate communication with school staff. Parents may contact the school by phone call, email, paper notes, or by scheduling a conference.

Communication from teachers, administration, and school originations will most commonly be sent by email or in Friday Folders. It is imperative that parents/guardians review the Friday Folder contents.

Additionally, a weekly newsletter (Smore) will be sent by email each Friday evening by the principal.

Finally, please log-in to your FACTS family portal for additional information and resources such as the school calendar and lunch ordering.

During summer break and for some circumstances, information is sent by mail and email to parents/guardians.

Please contact the school office if you need to update any contact information.

Public School District and Federal Services

St. Stephen School students are eligible for the special services available in the family's school district. For example, if a student's family resides in Oil City School District, that student is eligible for Oil City services. If the student's family lives in the Franklin School District, that student is eligible for Franklin services, and so on.

Special services typically provided by the public school districts to students include: bus transportation; school health; hearing and dental exams; part-time school nurse services; the Title I program; speech therapy; and the enrichment program.

Intermediate Unit #6, through Act 89, provides remedial assistance and enrichment opportunities in mathematics as well as speech and language therapy and professional school counseling services.. Title I services are provided by a certified Reading Specialist to eligible students.

Students are screened on an as needed basis, once referral is present, and the clear need is identified. If qualified, students will be given multiple assessments to determine their academic progress and level of proficiency throughout the year. These assessments align with and support the curriculum of St. Stephen School.

Textbooks and Supplies

Textbooks, Library books, paperbacks, and general school supplies are loaned to students. These are the property of St. Stephen School and must be returned in the condition they were loaned, excepting normal use and wear. Students who do not return textbooks or return them damaged will be required to pay for the repair or replacement.

Academic Information

Teachers and Classes

St. Stephen School is fully accredited (Middle States Association Accreditation) for grades K through 8. All teachers are certified by the Pennsylvania Department of Education.

Parent-Teacher Communication

The primary means of communication between parents and teachers is through notes sent with the child and emails. Teachers also rely heavily upon sending information and notices to families in Friday Folders. It is imperative that parents/guardians review the Friday Folder contents to remain involved in their child's learning and other activities. Parents are expected to sign and return the folder every Monday or the following school day if not in session on Monday.

Parent-Teacher Conferences

Parent-teacher conferences for all students are held in the fall on designated conference days (see the school calendar). The parent and teacher must schedule any other conferences. Parents are invited, and strongly encouraged, to contact their child's teacher or the administration for any reason. Parents are reminded to speak to the classroom teacher first to resolve classroom problems.

Report Cards

Report cards are issued four times per year at the end of each nine-week grading period. Progress reports are issued at the midpoint of each nine-week grading period to provide an update on student progress.

Grade Scale

Letter grades are assigned to numerical grade averages based on the following scale:

A =	93-100
B =	85-92
C =	76-84
D =	69-75
E =	68 or lower

Quarter grades are calculated using a mixed method:

- Teachers record assignment grades as points.
- The assignment's maximum points determine its value. Larger assignments will have larger point values.

- Assignments are divided into categories. Teachers will communicate if they weight categories.
- The quarter grade calculates in two steps:
 - First, the total points earned is divided by total possible points within each category.
 - Next, category grades are then averaged according to their weight.

Homework

Homework is often assigned to reinforce classroom learning, provide additional practice, and support students' academic growth. At St. Stephen School, teachers are expected to assign homework that is meaningful and appropriate. When planning assignments, teachers will take into consideration the age and developmental level of the student, the amount of work a student can reasonably complete independently, and their access to necessary materials outside of school. We encourage parents to:

- Establish homework as a top priority for their children
- Make sure children do homework in a quiet environment
- Establish a daily homework time
- Provide supportive feedback when homework is completed

When students neglect to complete their homework, they miss valuable opportunities to practice important skills and concepts. Over time, this can negatively impact their overall academic performance.

Consistently failing to complete homework is not only academically unwise—it also reflects a lack of responsibility and disregard for teacher expectations. Students who repeatedly choose not to complete their homework are choosing to disobey reasonable and clearly communicated academic expectations.

Teachers and staff may implement appropriate consequences for repeated failure to complete homework. These may include, but are not limited to: notes or calls home, demerits, lunch detentions, or other interventions deemed necessary to encourage accountability and support student success.

Missed Classwork

If a student is absent from school because of illness, requests for assignments will be accepted. The request must be made before 9:00 a.m. to allow teachers enough time to gather the classwork and homework, which can be picked up in the office at the end of the day or arranged to be sent home with a sibling. Teachers will only send home assignments (while a student remains absent) at the request of the parent. Though we understand not wanting to fall behind academically, recovery from illness should be the priority while a student is absent. When a student returns from being absent, they will

work with their classroom teacher to make-up any missing assignments. If a student is absent due to educational travel, work will be provided upon students' return.

Academic Dishonesty/Plagiarism

Plagiarism—using someone else's words or ideas and pretending they are your own—is dishonest and wrong. At St. Stephen School, we believe that all students should do their best work with honesty and integrity. Plagiarism goes against the Eighth Commandment, which calls us not to bear false witness, and it also breaks the Seventh Commandment by taking something that doesn't belong to us. Jesus teaches us to be truthful, to respect others, and to act with love and fairness. When we plagiarize, we are not only being unfair to others but also missing the chance to learn and grow. As a Catholic school, we believe in doing what is right, even when it's hard, and trusting that God will bless our honest efforts.

If a student is found to plagiarize or cheat on a test or assignment, consequences (i.e. detention, getting a zero for the assignment) will be decided on a case by case basis by the teacher/school administration in the lower grades. In grades 3-8, students will receive consequences according to the demerit system. Plagiarism includes the unauthorized use of AI (artificial intelligence) software such as ChatGPT on assignments.

Field Trips

Field trips provide educational enrichment and are sought when there is opportunity to extend the learning experience. Parent permission forms will be sent home and secured for all trips. Students will only be allowed to go on a trip if the parent has completed the permission form and it has been returned to the school. A student's eligibility to attend a field trip may be impacted by poor academic performance, missing assignments, or repeated behavioral concerns. Teachers and administrators will review student conduct and academic standing when determining eligibility for each trip.

Curricula

St. Stephen School uses the Diocese of Erie curriculum guides and approved textbooks. The Erie Diocese curriculum is available at <https://www.eriercd.org/schools/academics.html>.

All effort is made to align instruction to the Pennsylvania State Academic Standards.

Standardized Assessments

The Diocese of Erie has developed a philosophy of assessment in order to prioritize the needs of all learners, adjust instruction, guide planning, and inform students, parents, educators, and other stakeholders of academic performance.

Schools within the Diocese utilize NWEA MAP Growth assessment to measure student learning at various points throughout the school year. Below is a summary of the tests administered and their frequency.

Grade(s)	Test	Frequency
K-2	NWEA Maps Growth Reading and Math	Triannually (September, January, May)
3-8	NWEA Maps Growth Reading, Math, Language and Science	

Tests are administered electronically using student chromebooks. Teachers and administration will share individual student data with parents. They will also use the data in their classrooms to:

- Set classroom goals
- individually goal set with students
- adjust lesson planning and time
- identify small groups of students based on instructional needs

Religion and Ethics Education

St. Stephen School provides regular instruction in the Catholic faith and encourages all students to grow spiritually through prayer, reflection, and service. Students attend Mass regularly, and school liturgies are typically held in the gym. The study of Catholicism—and religion in general—is considered an academic subject at St. Stephen School and is part of each student’s core curriculum. Religion classes include learning about Scripture, Church teachings, moral development, and faith traditions.

As a Catholic school, we integrate faith into daily school life—not only in religion class but throughout all subjects and routines—by fostering compassion, respect, and a strong sense of social responsibility.

Students of all faith backgrounds are welcome at St. Stephen School. While non-Catholic students are expected to participate respectfully in religious instruction and attend Mass with their classmates, they are also encouraged to share their own religious traditions and may be invited to make age-appropriate presentations about their beliefs. Our school community values mutual understanding, reverence, and the shared pursuit of truth and goodness.

Technology and Robotics

St. Stephen School recognizes that technology plays an increasingly vital role in education, communication, and the modern workforce. To prepare students for a digital world, we provide integrated technology instruction for all students in grades K through 8. Students are encouraged to apply computer skills not only in the classroom but also as part of their lifelong learning and responsible digital citizenship.

St. Stephen School is a 1:1 campus: each student is provided with a Chromebook for school-related use. The Chromebook policy can be found on our website at <https://www.venangocatholic.org/studentinfo>.

Beginning in 4th grade, students are introduced to the VEX Robotics program, which fosters collaboration, problem-solving, and creativity through hands-on STEM learning. In 5th grade, students have the opportunity to prepare and participate in local VEX robotics competitions.

All technology use is governed by the Diocese of Erie's Acceptable Use and Internet Safety Policy. All students and parents must review this policy, sign the consent agreement, and return it to the school.

Personal electronic devices such as cell phones, personal laptops, tablets, or iPads are not permitted during the school day. The school is not responsible for lost, broken, or stolen personal devices.

Library

The school library exists as a support service to enhance the intellectual, personal, and social development of our students. Students in all grades have a scheduled weekly library period and are encouraged to check out books. Students with overdue books will not be permitted to check out new books until the overdue books are returned. Students will be asked to pay for any damaged or lost library books.

Academic Honors

Students are recognized for outstanding academic achievement at the end of each grading period beginning in the fourth grade. The following criteria is used for the honors designations:

Principal's List

1. Students must achieve "A's" in all major subjects: religion, science, social studies, English, math, reading/literature, and spelling.
2. Students must achieve "A's" or "B's" or "I's" or "2's" in all minor subjects: physical education, computer, health, music, and art.

Honor Roll

1. Students must achieve at least "B's" in all major subjects: religion, math, social studies, science, English, reading/literature, and spelling.
2. Students must achieve "A's" or "B's" or "I's" or "2's" in all minor subjects: physical education, computer, health, music, and art.

Failure/Retention

A student may be retained if a child is failing one or more classes. Retention decisions will be made on an individual basis by the teacher and administration.

Student Records

Parents and students over the age of 18 have the right to inspect their records upon written request. The federal mandate *Family Educational Rights and Privacy Act (FERPA)* requires that parents/guardians be informed of this mandate every school year. Notification is issued at the beginning of every school year. Records may be reviewed by making an appointment with the principal.

Non-Academic Information

Catholic Mission Memorandum of Understanding

As a parent/guardian of a student in a Catholic School, I understand, affirm and support the following:

1. The primary purpose of a Catholic school education is to form students in the values of Jesus Christ and the teachings of the Catholic Church.
2. Catholic schools are distinctive religious educational institutions operated as programs of the Catholic Church; they are not private schools but are administered and supported by the sponsoring parish(es), the diocese, or religious community.
3. Attending a Catholic school is a privilege not a right.
4. While academic excellence and involvement in extracurricular activities (i.e., sports, clubs, etc.) are important, fidelity to the Catholic identity of the school is the fundamental priority.
5. The school and its administration have the responsibility to ensure that Catholic values and moral integrity permeate every facet of the school's life and activity.
6. In all questions involving faith, morals, faith teaching and church law, the final determination rests with the diocesan bishop.

Religious Participation by Non-Catholic Students

Children who are not Catholic are warmly welcomed at St. Stephen School. In order to strengthen the partnership between home and school (the only true formula for

educational excellence), we established a policy regarding participation in religious activities and classes by our students who are not Catholic.

The foundation of our school is its religious identity. It is that identity and commitment to religious ideals and values that makes our school distinct from other, non-religious, schools. We believe that it is very important to the continued success and identity of our school that all of our students understand and respect these basic values. For that reason, it is our policy that all students will take part in the regular religious programs of our school.

Having stated that, we also wish to affirm our respect for the individuality and faith commitment of our non-Catholic students. Ecumenism is not an option for us; it is a requirement. No attempt will ever be made to “convert” anyone to the Catholic faith nor shall any non-Catholic student be required to do more than be present with his or her classmates in a respectful manner during any Catholic religious service.

There are many more likenesses than differences among the major faiths, especially regarding moral values. We believe that by the participation of all class members in religion classes and activities, every child will be enriched through each child’s unique contribution. We believe that such participation will promote harmony among and respect for the various faith traditions and will in no way endanger the beliefs of any child (especially since many studies have shown that home and parent example has far greater impact on religious beliefs and practices than does school). Students will be exempt from the memorization of prayers that are contrary to a student’s religious beliefs.

Disciplinary Measures

Each member of the St. Stephen School community is expected to accept responsibility for his/her conduct. We recognize some students will need help and encouragement to change their behavior. The following guidelines have been developed to help students grow in their understanding of responsible behavior. Our discipline program is meant to be an opportunity for learning. As such, this discipline code applies to all school-related activities as well as in the classroom.

In addition to the student commitment outlined in the school-parent-student compact, the following is a list of positive behaviors expected of students at St. Stephen School:

- Display a Christian attitude in words and actions.
- Make moral choices and judgments.
- Respect yourself and others.
- Practice self-discipline and self-control.
- Demonstrate respect for the rights and property of others.
- Resolve differences peacefully.
- Be honest when speaking and writing.
- Be attentive and complete assignments.

- Be on time.
- Dress appropriately.
- Demonstrate responsibility for the welfare of others.

Classroom teachers will develop their own system for behavior management and in their classrooms. This could include clip-charts, token economies, daily behavioral journals, etc. It is expected that teachers clearly communicate their policies and procedures to both students and parents. They should also identify an effective and consistent method for two-way communication between parents and teachers regarding student behavior.

The following consequences to enforce violations of school rules will be used at the teacher's or principal's discretion.

NOTE: The order of listing does not necessarily represent the order of consequence.

- | | |
|--------------------------|---|
| • Warning | • In School Suspension |
| • Apology | • Out of School Suspension |
| • Parent Conferences | • Suspension of Bus Privileges |
| • Work Assignments | • Parent Conference with Administration |
| • Removal from Class | • Expulsion |
| • Limited Privileges | • Other Consequences Deemed Appropriate |
| • Behavior Contracts | |
| • Payment for Damages | |
| • After School Detention | |

Students are expected to act in a respectful and appropriate manner including physical displays of affection. Inappropriate contact is not allowed in a school environment. We are asking you as parents to reinforce this at home when the situation arises. Students who do not abide by this rule will be given an after school detention. Should the behavior continue, the students risk detention and/or an in school suspension as a consequence. Students are reminded that they are to be young ladies and gentlemen.

Demerit System

In addition to the classroom teachers behavior management system, students in grades 3* through 8 will utilize a demerit system. A demerit serves as a written notice to both students and their parents of violation of school rules. The cumulation of three (3) demerits over an academic quarter will result in a lunch detention. The accumulation of five (5) demerits in a quarter will result in an after school detention.

*3rd Grade will transition to this system second semester

Demerits will be sent home in the next Friday Folder. They are to be signed by the parent and returned back with the folder on Monday.

Offenses Carrying One Demerit

- Disruptive behavior in or out of the classroom
- Obscenity or profanity
- Defiance or disrespect
- Horseplay
- Failure to comply with any directive of a teacher, staff member or administrator
- Inappropriate public displays of affection
- Throwing snowballs or other objects on school property
- Dress Code Violations (Grades 5-8)
- Academic Dishonesty–First Offense

Offenses Carrying Automatic Afterschool Detention

- Leaving the school building during the school day without permission or skipping school
- Theft (first offense)
- Fighting (first offense)
- Intimidation, bullying or cyberbullying, first offense (see “Anti-Bullying Policy”).)
- Possession of personal electronic devices, second offense (see “Policy for Personal Electronic Devices”)
- Violation of the Acceptable Use and Internet Safety Policy, first offense
- Academic Dishonestly—Second Offense

Offenses Carrying Automatic Suspension

Please note: should a student be found to have committed any of the following offenses, the school will contact the parents to retrieve the student immediately. The student will remain in out-of-school suspension until the student, parents, and principal meet to develop an action plan. Options include but are not limited to mandatory counseling, detention, in-school suspension, and dismissal from St. Stephen School.

- Intimidation, bullying or cyber-bullying, second offense (see “Anti-Bullying Policy”).)
- Vandalism on school property
- Theft (2nd offense)
- Fighting (2nd offense)
- Possession or use of alcohol, tobacco or any controlled substance
- Possession of drug paraphernalia

- Violation of the Anti-Hazing Policy, second offense
- Academic Dishonesty-3rd Offense

Offenses Carrying Automatic Dismissal

- Intimidation, bullying or cyberbullying, third offense
- Violation of the Anti-Hazing Policy, second offense
- Possession or use of weapons on school property
- Vandalism of the Chapel or desecration of the Eucharist

Lunch Detention

Students will sit away from classmates during the entirety of the lunch period. They may use this time while eating to reflect on their behavior.

Afterschool Detention

Detentions will be served after school from 3:00-4:00pm under the supervision of the assigning teacher and/or the principal. It is the responsibility of the parent to pick-up the student at 4:00pm.

Bullying and Cyberbullying

St. Stephen School is committed to providing a safe, positive learning environment for all students. The school recognizes that bullying creates an atmosphere of fear and intimidation, detracts from the safe environment necessary for student learning, and may lead to violence that is more serious. St. Stephen School prohibits any form of bullying or cyberbullying.

Definitions

“A person is bullied when he or she is exposed, repeatedly and over time, to negative actions on the part of one or more other persons, and he or she has difficulty defending himself or herself.” Dan Olweus

Bullying is an intentional written, verbal, or physical act or series of acts directed at another person or group of people.

Cyberbullying is an intentional electronic act or series of acts, through the utilization of computers, the Internet, social media, interactive technologies, or any electronic devices that are directed at another person or group of people.

This definition includes three important components:

1. Bullying is aggressive behavior that involves unwanted, negative actions.
2. Bullying involves a pattern of behavior repeated over time.
3. Bullying involves an imbalance of power or strength.

When bullying or cyberbullying occurs in a school setting, that is severe, persistent or pervasive, it has the effect of:

1. Substantial interference with a student's education.
2. Creation of a threatening environment.
3. Substantial disruption of the orderly operation of the school.

By definition, a school setting includes the school building itself, school grounds, school vehicles, designated bus stop or at any school sponsored activity, supervised or sanctioned by the school.

Reporting

St. Stephen School encourages students who experience any form of bullying or cyberbullying to promptly report such incidents to a teacher or the principal. In addition, any student, school employee, or person associated with the school is expected to report bullying that is observed.

All complaints of bullying shall be investigated promptly, and corrective action shall be taken when allegations are verified. Confidentiality of all parties shall be maintained. No reprisals or retaliation shall occur as a result of good faith reports of bullying.

Each student shall be responsible to respect the rights of others and to ensure an atmosphere free from bullying.

Every teacher will review this policy annually with students. The policy shall be posted on the school website.

Consequences for Violations

A student who violates this policy shall be subject to appropriate disciplinary action, which may include, but shall not be limited to:

- Parental conference
- Loss of school privileges
- Exclusion from school-sponsored activities
- Detention
- Suspension
- Expulsion
- Recommendation for Counseling/Therapy outside of school
- Referral to law enforcement officials

Anti-Bullying Investigation Procedure

Once a parent or student has made a report of bullying to the school, that report will be documented and the threat level will be determined. If a student or individual is in immediate danger, local law enforcement will be notified. Next, the school principal will notify the parents of all parties involved, and begin a process of investigation. During this time, for the safety of those involved, students may be asked to remain home. Remote learning via google classroom will be utilized if necessary.

During the investigation, the principal will interview those involved and those that may have been a witness to the bullying. Reference will be made to the definitions of bullying outlined above in this policy.

It will then be determined if the bullying claim is valid to the best of the principal's ability. Finally, the findings will be shared and consequences will be assigned if warranted.

It will then be determined if the bullying claim is valid. Finally, the findings will be shared and consequences assigned if warranted.

Internet and Social Media

The following are prohibited by students, parents, guardians, and school employees on any social media platforms and any personal websites or blogs:

- Threats or disparaging remarks about the school, its employees or its students.
- Cyberbullying or sexual harassment or any behavior that is ill-mannered or disrespectful.

Consequences for the above will be handled by the administration on an individual, case-by-case basis.

Calendars

Annual School Calendar

At the beginning of each school year, St. Stephen School provides each family with the annual school calendar. Because many students rely on public school transportation, the calendar generally follows the Oil City School District's calendar. Make-up days for school closings due to weather are listed on the annual school calendar. School calendars are also available on the school website.

Monthly School Calendar

Before or at the beginning of each month, the school office issues a monthly calendar to each family. The calendar lists a variety of school-related events and their scheduled times, such as athletic events, meetings, concerts, field trips, days when students

attend Mass, days when school is not in session, etc. Parents are always invited and encouraged to join us for any event. School calendars are also available on the school website.

Uniform Policy

St. Stephen School has a uniform code to provide direction and cohesion in school attire and to promote a non-competitive atmosphere to unify the image expected of a St. Stephen student. Students are expected to wear uniforms that are clean and neat while appropriately fitting. Shirts must be tucked in at all times unless they are wearing a banded shirt. All head coverings, unless they are worn for religious purposes, must be removed when entering the building and remain off until exiting, including any dress down days. All hats must be removed when entering the building.

Mass uniforms shall be worn on days that the students attend Mass, Stations of the Cross, and Penance Celebrations. Administration and teachers have the option to require the dress uniform when students are representing the school off-campus, giving in-class presentations, or when honored guests are visiting.

The school crest is optional on all shirts.

School plaid and other uniform apparel is available at www.shaheens.com/venango_region_catholic_school.html

Boys' Uniforms

- Khaki dress pants - no sweat, stretch, athletic, carpenter/cargo style, denim or jean style pockets/rivets, visible stitching, or jogger style.
- Khaki walking shorts - until Oct. 15th and after Easter break
- White, black, or red polo shirt - short or long sleeve
- White Oxford shirt - short or long sleeve **REQUIRED FOR MASS DAY**
- Plain black or red cardigan/vest/zip fitted fleece/crewneck sweatshirt (may have school name or crest)
- Black or brown dress belt- no large buckle **REQUIRED** if pants have belt loops
- Black or brown dress socks - crew length - no low-cut sport socks
- Dress shoes in a black, tan or brown - with a dark colored, non-marking sole, no high cut boots.
 - Canvas loafers such as TOMs or HeyDudes should be solid black, tan or brown with a dark sole. No patterns or glitter.
 - Sneakers of any kind are **NOT PERMITTED** except at recess and gym.
- Mass Uniform: Khaki dress pants, white Oxford shirt, tie (black, red, school plaid), black or brown belt.
- All shirts must be tucked in - not rolled at the waist throughout the school day.
- Hair must be neatly cut, clean, and well groomed - off the shirt collar and out of eyes - no faddish colors or styles.
- No earrings.

Girls' Uniforms

- School plaid or khaki uniform jumper - grades K-3
- School plaid or khaki pleated uniform skirt - grades 4-8
 - **All skirts** must be hemmed no shorter than two inches above the knee. This includes when wearing tights. Skirts should not be rolled at the waistband.
- Khaki dress pants (full waist, not pull-on or stretch style, regular rise with straight or tapered legs) - no sweat, athletic, carpenter/cargo style, denim or jean style pockets, rivets, visible stitching, or jogger style.
- Khaki walking shorts - until Oct. 15th and after Easter break
- White, black, or red polo shirt - short or long sleeve
- White tailored blouse - short or long sleeve **REQUIRED FOR MASS DAY**
- Plain black or red cardigan/vest/zip fitted fleece/crewneck sweatshirt (may have school name or crest)
- White or black knee-high socks, tights, or rolled dress socks
- Dress shoes in a black, tan or brown- with a dark colored, non marking sole, no clogs, slides, sandals, open-toed shoes, crocs, etc.
 - Canvas loafers such as TOMs or HeyDudes should be solid black, tan or brown with a dark sole. No patterns or glitter.
 - Sneakers of any kind are **NOT PERMITTED** except at recess and gym.
- Mass Uniform: Uniform skirt or jumper, white dress blouse
- Hair accessories can only be school plaid, black, red or white - no costume accessories are permissible
- Hair must be clean and well-groomed and out of eyes - no faddish colors, styles or hair tinsel
- Jewelry must be simple and small. No facial piercings.
- Make-up is not permitted.

Consequences for Uniform Violations

Following the school uniform policy helps promote a sense of unity, respect, and school pride. It teaches students responsibility and self-discipline, which are important virtues in both school and life. As a Catholic school, we believe that how we present ourselves—through our words, actions, and appearance—should reflect the dignity and respect we have for ourselves, others, and the learning environment God has given us.

If a student is out of compliance with the uniform policy, teachers will refer the student to the office. Administration will determine if the violation warrants a phone call to a parent to bring correct clothing, or if the violation can be corrected at present.

For older students who are able to prepare and dress themselves for school, repeated violations will result in demerits.

Dress Code for Non-Uniform Days

Several times throughout the year, opportunities will arise in which students do not have to wear their uniforms. The following guidelines must be followed during a non-uniform day to ensure appropriate dress during school activities:

- Students must wear clothing that fits appropriately and is not offensive to others.
- Shorts and skirts should be no shorter than fingertip length with arms extended.
- Revealing clothing is not permitted (i.e. tank top, bare midriffs, and halter-tops). The shoulder strap must be at least 3 fingers wide.
- Clothing with obscene or suggestive language, advertising tobacco or alcohol products is not permitted.
- Leggings are not to be worn as pants. If leggings are worn, a dress or long shirt must completely cover to finger-tip length with arms extended.
- Appropriate footwear must be worn.
- Pants must be worn at the waistline.
- Skirts and pant legs must be shorter than floor length.
- Hats are not to be worn in the building.

Gym Uniform

Students in grades 4–8 will change for P.E. class and adhere to a gym uniform. There are several reasons for this decision:

- **Promotes School Identity and Pride:** A gym uniform fosters a sense of belonging and school spirit. When students are dressed alike, they represent our school with pride both in and outside the building.
- **Encourages Equality:** Uniforms create a level playing field by reducing distractions and eliminating concerns about what to wear for gym class. This allows students to focus on participation and teamwork.
- **Practicality and Safety:** The uniform ensures that students are dressed appropriately for physical activity. Proper attire allows for free movement, reduces the chance of injury, and keeps students comfortable during exercise.
- **Teaches Responsibility:** Wearing a gym uniform helps students learn responsibility by caring for and remembering their gym clothes on scheduled days.
- **Preparation for High School:** In most high schools, students are required to change into gym clothes for physical education. By adopting a gym uniform in grades 4–8, we are helping our students practice this routine and prepare for a smooth transition to high school expectations.

Students are permitted to wear the following:

- Plain black athletic shorts or sweatpants. (Shorts must be an appropriate length, reaching at least mid-thigh. Bike shorts or form-fitting spandex shorts are not permitted.)

- A plain black or red T-shirt or a St. Stephen School spirit T-shirt.
- Athletic shoes suitable for physical activity

Currently, we have a gym uniform for purchase through J&S Screen Printing in Clarion via our online Spirit Wear store. We will be working with additional vendors such as Shaheens to make uniform options available.

Can students wear the gym uniform all day?

No. Students will change into their gym uniform after lunch on their scheduled gym day and will wear it home at dismissal.

School Supplies

Parents supply their child(ren) with basic school supplies such as pencils, pens, crayons, glue, scissors, etc. The school list of supplies is sent home to families with the last report card of the year for the following year, available on the school website, or available upon request. Students in grades 1 through 8 will be issued an assignment notebook for their grade level from the school office.

Daily Arrival and Dismissal

School hours are between 8:05 a.m. and 3:00 p.m. for all students. Busing is provided by the various surrounding school districts and St. Stephen School. All questions regarding busing should be directed to the school district in which the student resides. For further assistance, please contact the school office.

School buses pick up and drop off students at the West 3rd Street doors. Parents must not park in the bus lanes when picking up or delivering children.

Arrival

Students are not to arrive before 7:30 a.m. Prayer and announcements begin at 8:00 a.m. and instruction begins promptly at 8:05 a.m. Students who arrive after 8:00 a.m. need to ring the bell for entrance to the school and must go to the office for a tardy slip before going to class. When students consistently arrive late, it is disruptive to the classroom and results in time lost for all involved.

Repeated tardy infractions will result in the following consequences:

1. Anytime after 8:05 am students must report to the office.
2. 2nd offense same quarter: written warning sent to parent

3. 3rd offense same quarter: parent conference with child and principal-verbal warning of detention.

In addition, per the attendance policy, for every 300 total minutes that a child is late due to tardiness that is not medically excused, one unexcused absence will be assessed.

Students will be greeted at the West 3rd Street doors or the Reed Street/West 3rd Street doors (Mary Statue Doors). Students arriving at school, are to report directly to their classrooms.

Dismissal

Staggered dismissal times begin at 2:55 p.m. for all bus riders. Students who walk home or are transported by private vehicles will be dismissed at 3:00 p.m. using the Reed Street/West 3rd Street doors (Mary Statue Doors). Changes in your child's dismissal arrangements must be received no later than 2:30 p.m. for your child's safety. After 3:10 p.m., your child will be escorted to the school office where he or she may be picked up.

Early Dismissal

Typically once a month, students will be dismissed at 12:30 pm to allow for staff meetings and professional development. This will not affect the lunch schedule or bus transportation. Early dismissal days are indicated on the school's calendar.

School Bus Transportation

While on the bus, students are expected to behave appropriately and with respect towards the driver and other passengers. The discipline policy of St. Stephen School and the policy of the school district providing transportation, apply for all St. Stephen School bus riders. When out in the community and in uniform, students should demonstrate compliance with rules and regulations, as well as respect authority.

When the school receives a referral from a transportation provider for bus/van misconduct, students will receive the following consequences (in alignment with OCASD policy):

1st Offense - Warning

2nd Offense- 3 day suspension of riding privileges

3rd Offense – 5 day suspension of riding privileges

4th Offense - 10 day suspension of riding privileges

5th Offense – possible suspension of bus riding privileges for the remainder of the year

When a student is suspended from riding the bus, it is the responsibility of the parent to provide timely transportation to and from school.

If a student will be taking another form of transportation home or they are staying after school, the school needs to be notified either in writing or by phone by 2:15 p.m. Changes to dismissal can be sent to office@venangocatholic.org.

All questions regarding busing should be directed to the school district in which the student resides. For further assistance, please contact the school office.

In addition, we ask all St. Stephen students to sign a Bus Pledge (see appendix) to acknowledge that we hold them to high behavior expectations as riders. Almost all of our students will ride a school bus at some point in the school year as part of a field trip.

School Closings and Delays

St. Stephen School follows the calendar of Oil City School District; therefore, in cases of inclement weather, we will follow the decisions made by Oil City School District's superintendent. If Oil City is closed or on a delay, then St. Stephen School will also be closed or on a delay. If school is closed all school events and after school activities are also canceled for the day.

If possible, St. Stephen School will utilize flexible instructional days when weather conditions prevent safe travel. This allows students to receive remote instruction for the day and therefore not have to make-up an additional school day. For a student to receive credit for remote attendance, they must register attendance through the website and complete all assignments via google classroom. *Please see the flexible learning policy for further instruction.*

St. Stephen School draws students from many local school districts. If your home district is canceled, students are not required to report to school. For example, if Clarion Area School District is canceled due to inclement weather, students from that district are not required to report to school. This only applies to weather related closings and delays. For example, if school is canceled in a home district due to a power outage, VRCS students are still expected to attend school at our campuses.

If your home district utilizes flexible instruction/remote learning for the day, it is highly encouraged that the student still attend school if possible. However, if travel is unsafe, students should also utilize flexible instruction. The St. Stephen flexible instructional policy must be followed for the student to receive credit for the school day. If the policy is not followed, the student will be marked "absent excused" for the school day.

The decision may be made to postpone school for two hours rather than cancel school should there be reason to believe that conditions may improve. In the event of a two-hour delay, the following schedule will be utilized; the main doors of all schools will open at 9:30 a.m. Students should report directly to their classrooms as they normally do. All classes will begin at 10:05 a.m. for elementary students.

The decision to close or delay will be (in most cases) made by 6:00 a.m. If the decision is made to postpone, the superintendents of the local school districts will reevaluate the decision and weather conditions to determine if school will remain open or be canceled.

Weather-related closing or delays will be announced through FACTS--Parent Alert, our school broadcast system. Closings and delays will also be available through Forever Media radio stations, and social media. It is the parent's responsibility to monitor the media to determine the status of school closings and transportation schedules. If you do not have access to social media or radio, please make arrangements with a dependable family member who will call you when he or she is aware of the closing.

Please keep in mind that weather conditions may deteriorate during the course of the day, and the need may arise to dismiss students early. Should an early dismissal occur, students will be sent home via their normal method of transportation. Parents should develop a contingency plan for child care needs in the event of a school delay, closing, or early dismissal. If your contingency plan requires different means of transportation rather than the usual method, please inform the school when the need arises.

Remember, our main means of communicating inclement weather to you is through our school broadcast system FACTS--Parent Alert. It is crucial that you have an emergency number in the system. Please notify the school if you have additional work, cell phone, or other numbers that need to be included.

Student Absence & Tardiness

St. Stephen School affirms that regular attendance at school is important to student development, readiness to learn, and social and academic progress. St. Stephen School is committed to providing a school environment that enforces the compulsory attendance law through proactive cooperation among students, parents, administrators, teachers, district judges, juvenile probation, and the Office of Children and Youth. St. Stephen School is responsible for monitoring and maintaining records of the attendance of students. We want every child to succeed in school. If a child is not here, they are missing valuable information and instruction. Please have your child to school on time every day.

Lawful Excuses

Absences and tardiness are considered excused when a student is prevented from attendance for mental or physical illness, family emergency, death of a family member, medical or dental appointments, authorized school activities, and educational travel of five or fewer days.

For educational travel, parents must submit an Educational Travel Application for advanced permission from the principal for a child to miss school. Educational Travel

Days (up to five full days per school year), count as part of the ten days absent without a doctor's excuse. All requests must be submitted two weeks prior to the student's absence and be pre approved by the principal. Failure to obtain pre approval for an absence for educational travel will result in an unlawful absence. Permission is given on a case-by-case basis. All missed assignments will be given upon the child's return to the school.

If a student needs to be away for more than five days for extenuating circumstances, it must be pre-approved by the school principal.

In addition, lawful absences include student attendance at court hearings related to the student's involvement with the Office of Children and Youth or juvenile probation. It is the responsibility of St. Stephen School to determine the validity of all excuses.

Cumulative Lawful Absences

A maximum of ten days of cumulative lawful absences verified by written notification are permitted during a school year. All absences beyond ten cumulative days require a written excuse from a physician.

Unlawful Absences

An absence for which the school has not received a written excuse from the parent/guardian and is not listed as a lawful excuse or has advance permission to be away for educational travel, is considered an unlawful excuse. If an excuse is not received within three days of the absence, the absence is permanently counted as unlawful.

Truancy

A student is considered truant when he/she is absent for three or more days without a valid excuse. After three unexcused absences, the truant officer for Oil City Schools and Children and Youth Services will be contacted. The truant officer will issue fines if deemed necessary. The public school district is responsible for enforcing the Pennsylvania compulsory attendance laws.

Half Day Absences

Students who arrive after 9:30 a.m. will be marked for a half day absence. Students who depart before 1:15 p.m. will be marked for a half day absence. In all incidents of late

arrival or early dismissal please contact the school secretary to clarify any questions regarding attendance.

Tardiness

Students are considered tardy if they are not in their classrooms by 8:05 a.m. Tardy students must obtain a tardy slip from the office before going to their classrooms. Tardiness due to bus delays is not counted against the student; however, the student must report to the office prior to reporting to the classroom to let staff know of their arrival.

School Lunch Program

Students have the option to bring packed lunches from home, or purchase a hot lunch meal from the cafeteria. Our cafeteria is serviced by staff of Nutrition Inc. Currently, there is one meal option provided daily at a cost of \$4.25. Each meal includes milk. The lunch menu is communicated via the FACTS family portal. Families interested in purchasing lunch must do so through their family portal by Friday before the upcoming week. No cash is accepted in the school office. Changes to the lunch menu will be communicated as soon as possible.

For those who prefer to pack, we encourage students to bring lunches that contain healthy choices to school. Please do not send “non-food” items in lunch boxes such as candy and toys. Lunches should be packaged in a way that students are capable of opening all items on their own. Soft drinks are not allowed. Students are asked to bring their own utensils. Students do not have access to microwaves to heat food, or refrigerators to keep food cold.

If a student forgets to bring their lunch, they will be given the daily hot-lunch, and parents will be responsible for repaying the school. If a student will be absent or arrive late to school, please call the office in the morning so that we can accurately account for lunch orders.

Snacks

Students may also pack a snack to eat in the morning. This should not take the place of breakfast, but rather help students to stay focused and eliminate any hunger before lunch. Snacks should be healthy, simple and “dry”--not containing liquids. Suggestions include fruit, crackers, cut-up vegetables.

Water Bottles

Students are permitted to carry a water bottle throughout the day. We have access to bottle filling stations on the bottom and middle floors of the building. Students are not permitted to drink anything other than water in their classrooms.

School Health Program

Please contact the school to discuss any health problems or attendance concerns. The teachers, administration, and school nurse can make necessary adjustments to ensure your child's safety and continued participation in school.

Accidents and Illness at School

If a child is injured or becomes ill at school, the teacher, staff, and/or school nurse will assess your child and determine if the parent/guardian needs to be notified. If the school nurse is not in the building, they may be called to be consulted. If the parents are not available, then the person designated as the child's emergency contact will be notified. Emergency contacts need to be in our area so their response time does not endanger the child. Be sure to keep the school informed of any changes in telephone numbers, addresses, places of employment, and emergency contacts.

Immunization Requirements

All children must be immunized against the following diseases before admission to school.

- Diphtheria
- Tetanus
- Polio
- Measles
- Rubella
- Mumps
- Hepatitis

Screenings

Our goal is to assist all children to be as healthy as possible so they may profit the most from being in school. With this goal in mind, the following screenings are completed each fall.

Vision	All Students
Hearing	Kindergarten through Grade 3
Height/Weight	All Students
Scoliosis	Grade 6

Physical	Kindergarten & Grade 6
Dental	Grade 3

Following the screening, your child will bring home a paper informing you of their participation. The school nurse, following the screening, will retest anyone who does not pass the initial screening. You will be notified at that time if there is a need for any further evaluation.

It is recommended that physical and dental examinations be done by the child's private physician and dentist. If they are not done privately, they will be done in school. Parents will be notified and are urged to attend.

Illnesses & Hospitalizations

A confidential health record is kept for each child. Please let the school/nurse know if your child's health status changes or if your child is on any medications. The nurse, teacher, and administration can make necessary adjustments to ensure your child's safety and continued participation in school.

St. Stephen School requires that students be kept home from school when the child has a fever of 99°F or higher, or is experiencing vomiting or diarrhea. Parents are not to medicate for a fever and send the child to school. A parent will be required to pick a child up from school should he or she experience such symptoms during the school day.

Medications

Medication should be administered to students during school hours only when necessary. No medication, including cough drops (neither prescription nor over-the-counter), will be administered to students by school staff unless written authorization including parent/guardian's and physician's signatures is provided. New forms will be required for any change to dosage or frequency.

Medication must be provided in the original pharmacy or over-the-counter container properly labeled with the child's name. Medications are kept secured in the school health office or school office. Contact the school office with any questions.

Remember the nurse is willing to answer any questions or concerns you may have regarding your child's health. No medications, including over-the-counter as well as prescribed drugs are to be kept in student desks, gym bags, book bags, or pockets.

Communicable Diseases

The following are Pennsylvania Department of Health requirements regarding school attendance and communicable diseases. If you suspect your child has one of the following, please consult a physician before sending him/her to school. If your child has been diagnosed by a physician as having one of the following conditions, your child is to be kept home from school for the indicated period of time. The school, if they

suspect one of the following conditions, may require you to obtain a note from the physician before returning to school.

Covid-19	St. Stephen will adhere to the most current CDC recommendations.
Mumps, Measles and Rubella	Diagnosis and recommendation by physician necessary.
Chicken Pox	Six days from last crop vesicles.
Scarlet Fever	Not less than seven (7) days from the onset or 24 hours from the institution of antibiotic therapy.
Pink Eye	Must be excluded from school until the eye is clear or has been diagnosed by a physician to determine it is no longer contagious.
Impetigo	Physician diagnosis and treatment indicated. Child may return to school with written notification from the doctor that the condition is no longer contagious.
Tonsillitis or Strep Throat	24 hours from the beginning of antibiotic therapy.
Scabies	24 hours after treatment.
Ringworm	Until judged non-infectious by a physician.
Pediculosis Capitis (head lice)	Students with live lice will be sent home at the end of the day and parents will be notified. They will be readmitted following the first treatment.

Volunteers

St. Stephen School enjoys significant volunteerism by parents, alumni, and community members. Parent volunteers serve our school in countless ways; coordinating class parties, assisting as field trip chaperones, helping in the classroom, assisting with maintenance and development projects. All volunteers must complete the appropriate paperwork which can be obtained in the school office or the Diocesan website:

<https://www.eriercd.org/childprotection/secf-schoolvolunteer.html>

Please note that coaches may have additional items to complete.

Volunteers

Before working with children in any school, all volunteers must have the following documents and clearances:

- A signed Statement of Intent for Compliance indicating the person has received, read and agrees to conform to the diocesan Policy for the Protection of Children.
- The PA State Police Criminal Record Check (every five years)

- The PA Department of Human Services Child Abuse History Certification (every five years)
- One of the following:
 - a. The Federal Criminal Record Check which includes fingerprinting (every five years) (required for any volunteer who has not been a continuous resident of Pennsylvania for ten years)
 - b. Affidavit as required by PA law (for all other volunteers).
- A completed diocesan Application for Adults Working with Children and Youth
- State Mandated Reporter Training (every five years)
- A signed diocesan Mandated Reporter Compliance Document (every year)
- Clearance from the Office for the Protection of Children and Youth

Sports and Extracurricular Activities

Academic Requirement

All athletes must maintain a C average in all major subjects (major subjects are religion, science, math, English, social studies, and reading/literature).

If a student earns a D average in a major subject:

- First week - warning
- Second week - ineligible - if there has been an opportunity to improve the grade.
- D average may be considered acceptable in the case of exceptional effort.

Attendance Requirement

Students must attend school a full day of school in order to attend any extra-curricular activities on that day. Exceptions to the above are those students who have pre-excused absences such as doctor or dental appointments, funerals, or other approved personal reasons. A student will be considered to have attended a full day if he or she is in attendance by 9:30 a.m. and attends the remainder of the day.

Incomplete Assignments and Conduct

If a student has a detention for inappropriate conduct, the student must sit on the bench for the next game. He or she must be in full uniform. The status of the student will be communicated by the teacher to the Principal who will notify the Athletic Director.

Appendix

Parent Partnership Program

25-26 School Year



1.0 PURPOSE

The purpose of the Parent Partnership Program is to drive **engagement, volunteerism, and community building** within St. Stephen's School and our local area. This program will provide opportunities for school families to engage in their preferred way, offering credit for contributing their time, talent, and treasure.

2.0 PROCEDURE

Effective for the 2025-2026 school year, each school family will have a **\$250 Parent Partnership** charge applied to their account. Throughout the year, families will have the **opportunity to offset or negate** this charge by participating in the program in the following ways:

\$10 = 1 Volunteer Hour (Summer Festival, Soup Fest, Athletic Concessions, Reverse Raffle, Lunch Duty, etc.)
1 Volunteer Hour = (10) Sold Raffle Tickets (12 Days of Christmas, Spring into Summer)

3.0 TRACKING

Volunteer hour tracking will be **completed via a self-submittal** via the FACTS Parent Portal. An account balance will be distributed along with Raise Right Distributions for review. Should there be any reconciliation discrepancies, please work through the school office.

Raffle tickets will be tracked and recorded through the school office; **however, please still self-submit earned hours via FACTS.**

4.0 DISTRIBUTION

Earned hours will be distributed in the following ways:

1. **For families that utilize the FACTs program** = A credit will be made to your tuition three-times a year based on the number of hours of service logged in November, February and May.
2. **For families that pay in full** = A check will be issued once hours are complete at the next distribution.

5.0 Q & A

We recognize with the revitalization of this former school program that families may have questions, please refer to the below. If your question is not directly answered below, please contact the school office for clarification.

Frequently Asked Questions:

1. *Will the Parent Partnership Program replace the RaiseRight Program?*

No, this program does not replace the RaiseRight Program. Thanks to continued support from our school community, RaiseRight has become a key source of income, directly contributing to our overall operating budget. Ultimately, this enables us to offset the total cost of education for our families.

2. *What if we have multiple students at St. Stephens, will I be charged multiple times?*

No, the charge will be applied 1x per school family, per school year.

3. *What if I am a single parent or guardian?*

The program still applies as outlined in Section 2. Both custodial parents, if they are both financially responsible, can split the hours (mom will volunteer 12.5 and dad will volunteer 12.5).

4. *Can my family or other school supporters contribute to my account balance?*

No, only parents may earn hours unless given permission by school administration.

5. *Do I need references to volunteer?*

For volunteer opportunities that involve working at the school during school hours or directly with students, volunteers will need to have all required references on file with the school office prior to the volunteering event.

6. *What if I am unable to participate?*

The \$250 charge will remain on your school account as payment in lieu of participation.

7. *What if I volunteer beyond my 25 hours? Will I earn more than \$250 in tuition credit?*

\$250 is the maximum amount that will be credited towards your tuition or refunded. However, we ask families to volunteer and support our fundraising efforts as much as possible.

Application for Educational Travel

Student Name	Parent/Guardian Name
Contact Phone Number	Contact Email
Date of First Day of Absence	Date of Return to School
Location of Trip	
Reason for Travel	
Educational Opportunities and Objectives	
Parent/Guardian Signature	Date
Parent/Guardian Signature	Date

☐ Approved

☐ Denied

Principal Notes	
Principal Signature	Date

Technology Lease Agreement

* In conjunction with Acceptable Use and Internet Safety Policy

To enhance learning, enrich the educational experience, and provide for the development of twenty-first-century skills, St. Stephen School students will be provided access to electronic devices to use during the school year. This incredibly powerful tool empowers students to maximize their full potential by preparing them for the future and distinguishes St. Stephen School as a model of academic excellence.

Within this document, **Device** is defined as any computer, cellular phone, smartphone, digital camera, video camera, audio recording device, or another electronic device that can be used to create, store, or transmit information in the form of electronic data.

The use of these technologies is a privilege that carries responsibility and behavioral expectations. The devices are school property; students must take the utmost care of their assigned devices to ensure it is in good working order to be returned to the school. All members of the St. Stephen School community will use devices along with the school's network in a responsible, ethical, and legal manner at all times by following the Technology Lease Agreement and Acceptable Use and Internet Safety Policy.

Parent/Guardian Responsibilities

Talk to your children about values and the standards that should be followed on electronic devices just as you would for the use of all media information sources such as social media, television, phones, movies, and music. In addition:

- Review the Technology Lease Agreement and Acceptable Use and Internet Safety Policy with your child(ren).
- Monitor your child's treatment, care, and home use of school devices to help instill in them a pattern of responsible ownership.
- Provide access for the device to be charged regularly at home.
- Provide optional accessories, for example, a mouse.
- Provide internet access (at home).
- Provide printer capabilities (at home – optional).

School Responsibilities

- Provide device, charger, and protective carrying case.
- Provide internet access (at school).
- Provide required educational apps and software for use with the device.
- Provide professional development to school staff to support students' device use and ensure student compliance with the Technology Lease Agreement and Acceptable Use and Internet Safety Policy.
- Teach students to use and embrace new technology in meaningful ways.
- Label each device with a unique serial number that will be assigned to each student.

Student Responsibilities

- Use devices in a responsible, ethical, and legal manner by following the Technology Lease Agreement and Acceptable Use and Internet Safety Policy.
- Follow all policies concerning responsible care of devices and accessories.
- Obey school rules concerning behavior and communication that apply to device use.
- Turn off and secure their device after they are finished working to protect their work and information.
- Back up all critical files.
- Make sure the device is ready for classes, charge the device at home every night before school.
- Take the device home and bring the device back to school every day unless directed otherwise.
- The device and all accessories may not be used by anyone other than the student they are issued.
- No stickers, writing, scratching, etc. may be placed on the device or any accessories (chargers, cases).
- Devices must always be in their school-issued protective case; alternative cases are not allowed.
- No food or drink may be consumed near the device. Devices are not allowed in the cafeteria when food and drink are present.
- Do not leave the device in direct sunlight, in vehicles, or places of extreme temperatures.
- Report the need for repairs to administration immediately. Do not attempt to dismantle or repair the device yourself.

- Do not attempt to root, jailbreak, or unlock the device.
- Do not attempt to bypass, disable, alter, or uninstall security software, school device policies, or user accounts on the device.
- Never leave the device unattended or in plain view.
- **Do not access social media or install any social media apps or software on a school-issued device.**

Acceptable Use

The use of the St. Stephen School technology resources is a privilege, not a right. The privilege of using the technology resources provided by St. Stephen School is not transferable or extendible by students to people or groups outside the school. It terminates when a student is no longer enrolled in the school. This policy is provided to make all users aware of the responsibilities of the efficient, ethical, and lawful use of technology resources.

Apps, music, video, books, etc., hereafter referred to as “media,” are allowed to be installed on student devices as long as they are the owner of that content. Media must not be offensive or inappropriate.

Unacceptable Use

Any attempt to circumvent or bypass the web filter is a significant offense. Internet usage on the device is not monitored while students are away from the school network, and St. Stephen School takes no responsibility for students’ content. Parents should monitor student activities as they feel necessary while at home. There should be no expectation of privacy; devices are subject to inspection at the request of administration and without prior notice. Student Activities Strictly Prohibited includes but is not limited to:

- Illegal installation, appropriation, or transmission of copyrighted materials
- Any action that violates existing St. Stephen School policies, St. Stephen School student handbooks, or public law
- Sending, accessing, uploading, downloading, or distributing offensive or embarrassing, profane, threatening, pornographic, obscene, or sexually explicit materials or those that can be interpreted as harassing or demeaning
- Using the device camera, video, video/audio conferencing apps/software, or other apps/software in any way that is offensive, profane, threatening, pornographic, obscene, sexually explicit, or

damaging to another person

- Use of chat rooms sites selling term papers, book reports, and other forms of student work
- Taking pictures of other student's work unless working on a group project
- Use of peer-to-peer file-sharing or illegal file-sharing sites
- Any form of jailbreaking, rooting, unlocking, or in any other way tampering with the device's operating system
- Changing device settings (exceptions include personal settings such as font size, brightness, etc.)
- Spamming, sending mass, or inappropriate emails
- Gaining access to other students' accounts, files, and data
- Use of the school's Internet, network, or email accounts for financial or commercial gain or any illegal or inappropriate activity
- Use of any form of anonymous and false communications
- Participation in credit card fraud, electronic forgery, or other forms of illegal behavior
- Vandalism (any malicious attempt to harm or destroy hardware, software, or data, including but not limited to the uploading or creation of computer viruses or computer programs that can infiltrate computer systems and/or damage software components) of school equipment
- Bypassing the school's web filter through a proxy server or VPN
- Using another student's device
- The device may not be used to take pictures, videos, or record sounds of other students, guests, or school personnel without their consent.

Legal Propriety/Copyright

All students must comply with trademark and copyright laws and all license agreements. Ignorance of the law is not immunity. If you are unsure, ask a teacher or parent. Plagiarism is a violation of St. Stephen School handbooks. Give credit to all sources used, whether quoted or summarized. This includes all media forms on the Internet, such as graphics, movies, music, and text. Use or possession of hacking software is strictly prohibited. Violation of applicable state or federal law will result in criminal prosecution and disciplinary action.

Policy Violations and Disciplinary Consequences

Misuse of a school device will result in confiscation and search of the device. Suppose violations of the technology agreement are found on the device. In that case, the device will be restored to the school default settings at the

discretion of the administration, resulting in the loss of all installed media and any school assignments/classwork that was not backed up. Students would be held accountable by their teachers for not completing assignments if their device was restored due to misuse. The school may take additional disciplinary action and or loss of privileges/features depending on the severity of the infraction, including detention, daily check-in/checkout of the device from the administration, device privilege suspension, and termination of privileges. Violations may result in disciplinary action up to and including expulsion for students. When applicable, law enforcement agencies may be involved. The school administration will be the sole judge of interpretation, violation, and penalization of every aspect of the Technology Use Policy.

Loss of School Property

Students are responsible for the loss of devices, including devices that are assigned to them. The student will be responsible for the device's replacement cost if it is not found within two weeks. Any missing or stolen equipment must immediately be reported to the administration and, if appropriate, the nearest law enforcement agency. Every effort will be made to locate and recover the missing device.

- Procedures for Reporting Theft Outside the School
 - Report immediately to the law enforcement jurisdiction where the loss/theft occurred and file a report.
 - Request a copy of the report to give to the school.
- Procedures for Reporting Theft Inside the School
 - Report immediately to the office.
 - Retrace all steps taken since the loss of the equipment. Check with teachers, classmates, siblings, etc.
 - Follow the above procedures for reporting outside the school.

Malfunctioning devices must be reported immediately to the administration so that the device can be repaired or replaced.

Unattended devices – devices are not to be left alone and should be secured when not in use.

Device Check out Procedure

Criteria for checking out a device:

- A completed, signed copy of this agreement (only the last page is needed).
- A completed, signed copy of the ACCEPTABLE USE and INTERNET

SAFETY POLICY (only the last two pages are needed).

- Insurance for the device must be purchased through St. Stephen School.

Once the equipment has been checked out, it is in the student's full possession and responsibility.

Device Return

All items that were checked out to the student when the device was assigned must be returned when the student graduates, transfers out, or at any time at the school's direction. When the device and accessories are returned, they will be inspected for damage. Damages outside of normal wear and tear must be paid for by the student or parent at the time of return. If you do not return the device or make arrangements to return the device, you will be billed the device's market value and all accessories.

Warranty Information/Assessment of Costs

If a manufacturer defect causes a problem, it will most likely be covered under the device warranty. Accidental damage warranty coverage is subject to the terms set by the warranty provider, who will ultimately decide whether or not the damage will be covered. Examples of accidental damage include liquid submersion, power surge due to lightning, theft, fire/flood/natural disaster, and vandalism.

The accidental damage warranty will not cover intentional damage or willful neglect, and the student will pay for the damages out of pocket. Examples of damage not covered by warranty:

- Throwing or punching the device
- Carrying the device unprotected in the rain
- Leaving in extreme temperatures

School User Account

The school will provide each student with a user name and password for google, network files, and internal web sites. You are responsible for this user account's activities, so you must protect your account from being used by others. Be sure to log out of any computers when you are finished with them and do not share your account information with anyone.

The school account includes an email account. This account will be used by faculty, staff, and administration, and fellow students.

- Email is to be used for school-related communication only. Advertising, jokes, chain letters, etc. are not permitted.

- File attachments should only be sent when they are for educational purposes.
- Per the Acceptable Use and Internet Safety Policy, all account information is the school's property and may be accessed by the administration at any time for any reason.

Personal Device Use at School

Personal computers and devices are prohibited from use at school. School provided computers will be available for computer class assignments that cannot be performed on assigned student devices.

None of these policies and guidelines shall interfere with school authorities' right to act swiftly and decisively in dealing with situations believed to be detrimental to the student's welfare, the student population, or the learning environment.

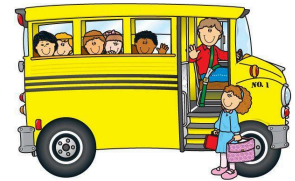


ST. STEPHEN SCHOOL

St. Stephen School Student Transportation Pledge

As a student of St. Stephen School, I understand that riding a school bus or van is a privilege and a responsibility. Whether I am traveling to and from school, going on a field trip, or attending a school event, I represent my school in the community. I pledge to:

1. **Follow all rules** set by the driver and the transportation company.
2. **Remain seated** and keep my hands, feet, and belongings to myself.
3. **Use respectful language** and speak in a quiet, appropriate voice.
4. **Treat the driver and all passengers** with kindness and courtesy.
5. **Keep the bus or van clean** and free of damage.
6. **Respect the safety of everyone** by avoiding distractions and following directions the first time.
7. **Represent my school with pride** by being polite and demonstrating good behavior at all times.



I understand that my behavior on the bus or van affects my safety and the safety of others. I will do my part to make every ride safe, respectful, and reflective of the values of St. Stephen School.

Students who become serious discipline problems on the bus may have their riding privileges suspended by the principal. The parent of a suspended child is responsible for seeing that their child gets to and from school safely.

The following procedure will be used should the driver report an offense to the school:

1st Offense - Warning

2nd Offense- School Consequence

3rd Offense – 1 day of suspended bus riding privileges

4th Offense – 3 days of suspended bus riding privileges

5th Offense – 5 days of suspended bus riding privileges

6th Offense – possible suspension of bus riding privileges for the remainder of the year

* These consequences are a guideline, and at any time administration may use their discretion to issue a higher level of consequence based on the severity of the infraction

Parent Signature

Date

Student Signature—One form per student please.

Grade